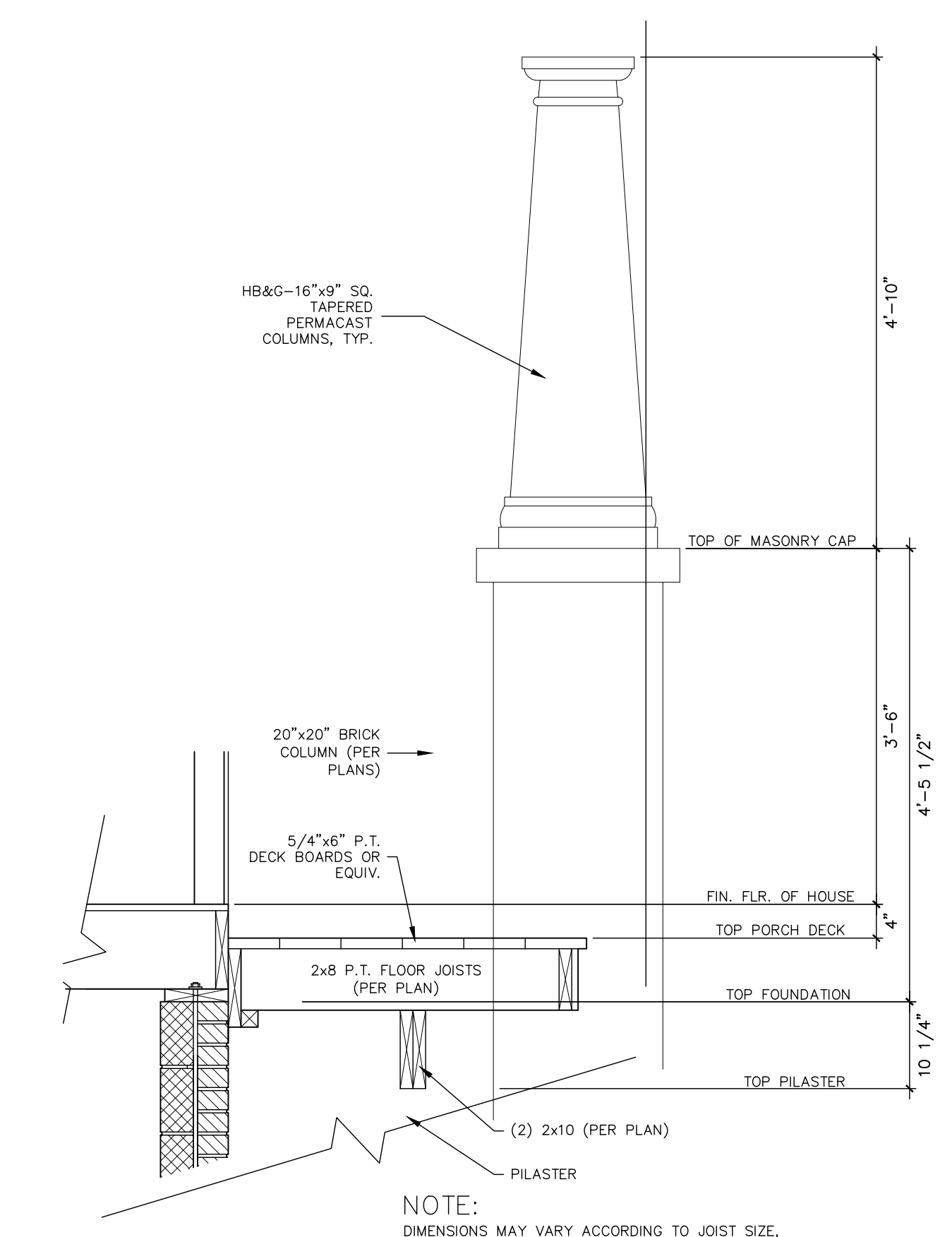


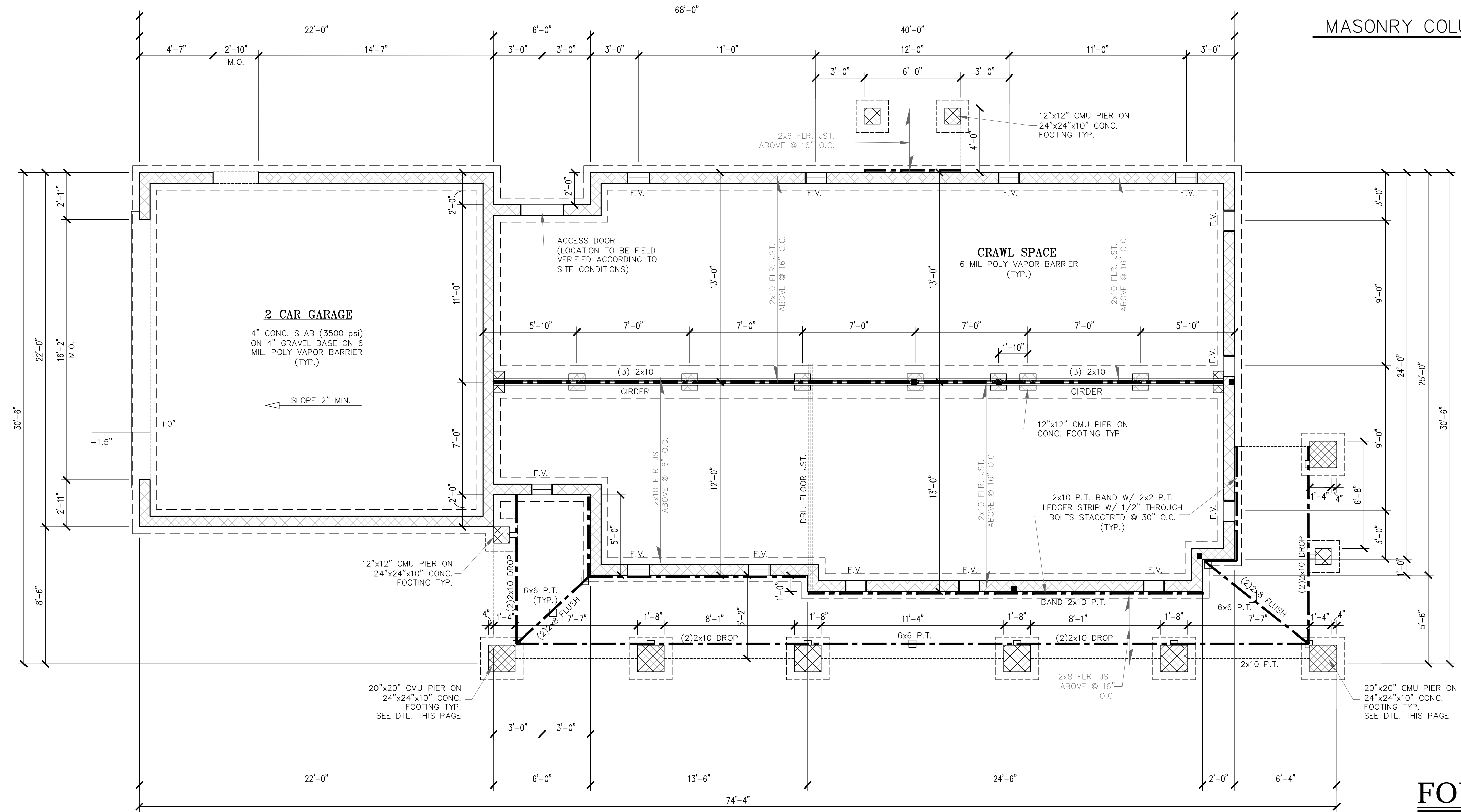
METHOD CS-PF: CONTINUOUS PORTAL FRAME BRACED WALL PANELS

SCALE: 1" = 1'-0"



MASONRY COLUMN/JOIST DETAIL

SCALE: 3/4" = 1'-0"



FOUNDATION PLAN

SCALE: 1/4" = 1'-0"

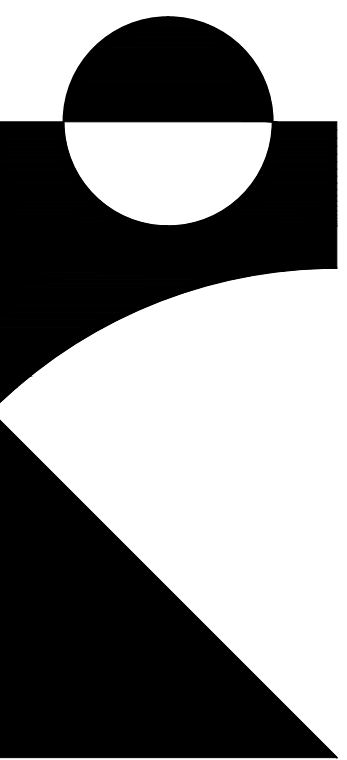
BUILDER  
BLUE RIDGE HOMES, LLC  
1186 LICKINGHOLE RD.  
GOCHLAND, VA 23063  
804.614.4556



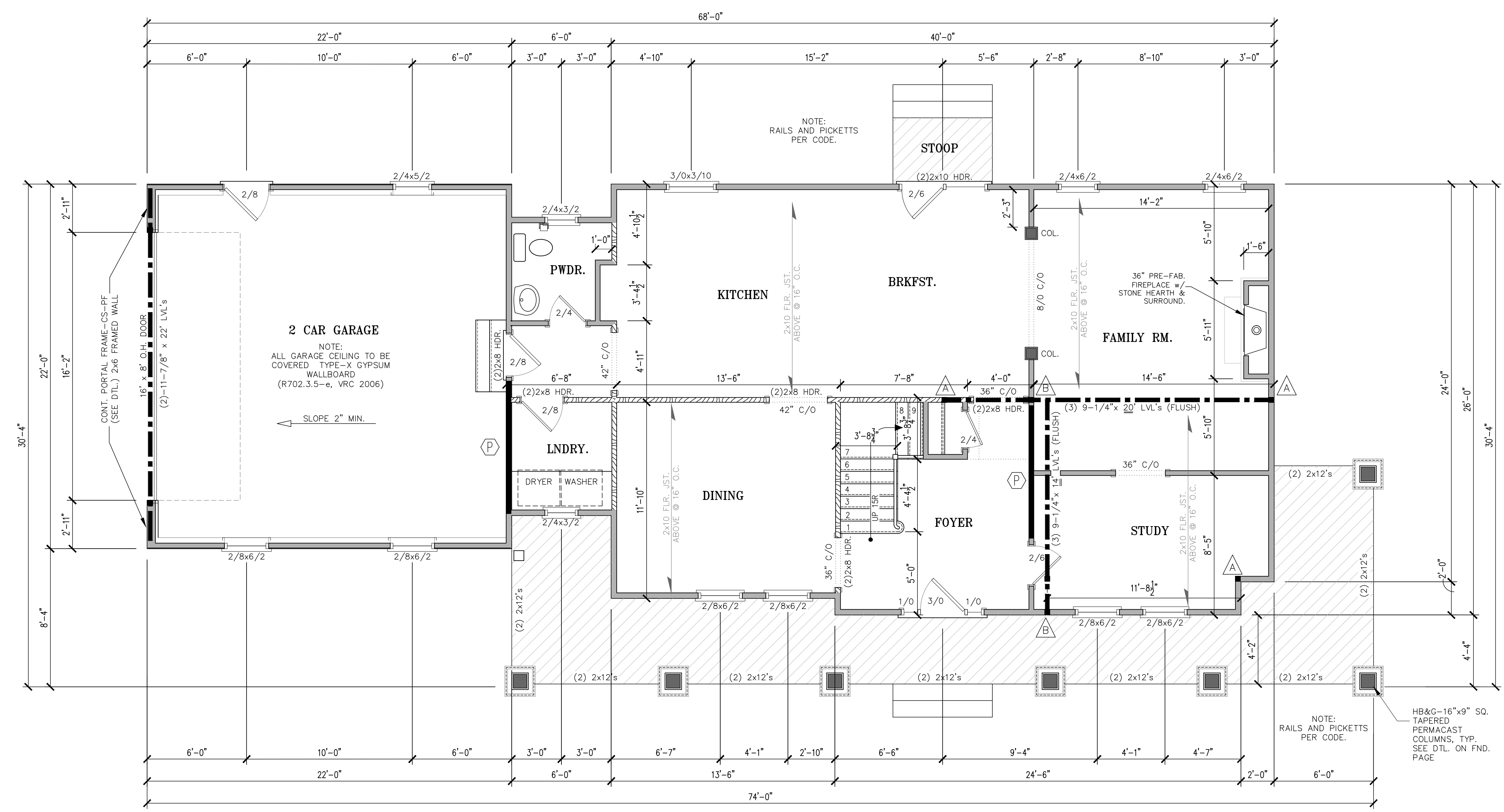
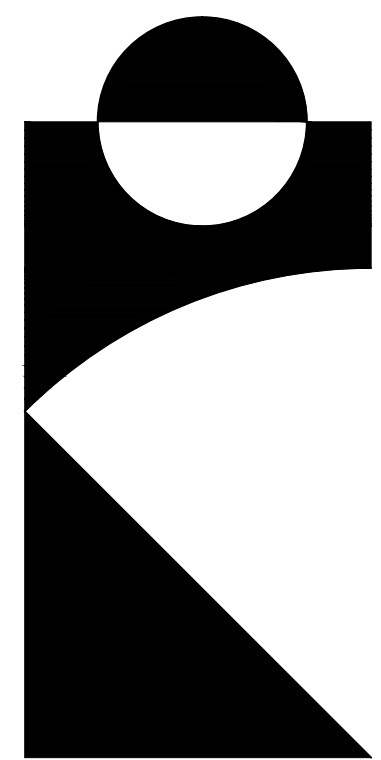
THOMPSON RESIDENCE  
FOUNDATION PLAN  
SCALE: 1/4" = 1'-0"  
08-12-10



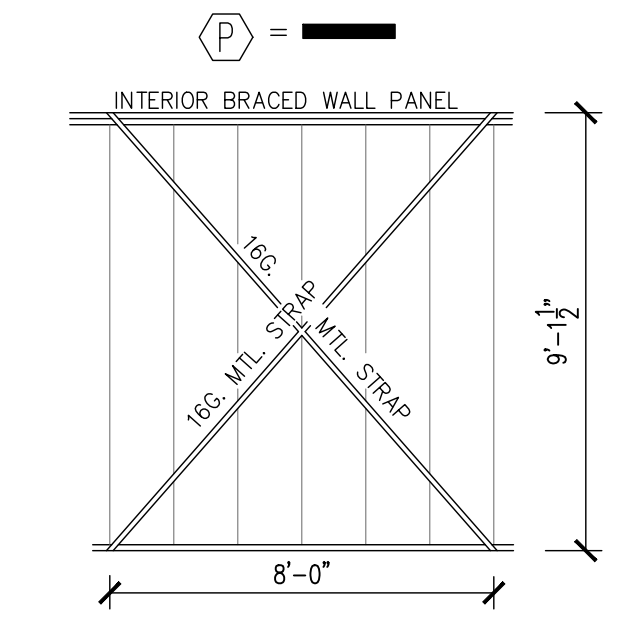
JOSEF FLEMING  
ph: 804.389.6003



SHEET  
1  
of  
3



NOTE:  
 METHOD "LIB" USING APPROVED CONTINUOUS METAL STRAPS @ 45° TO 60° ANGLES, FASTENED & INSTALLED PER MANUF. & IN ACCORDANCE w/TABLE (R602.10.2.1, VRC 2006) (SEE BELOW)



**FIRST FLOOR PLAN**  
 SCALE: 1/4"=1'-0"

**SQUARE FOOTAGE:**

FIRST FLOOR:	1,137 s.f.
SECOND FLOOR:	869 s.f.
TOTAL FINISHED AREA:	2,006 s.f.
GARAGE:	478 s.f.
FRONT PORCH:	307 s.f.
REAR STOOP:	24 s.f.
2nd FLR. OVR. GARAGE:	147 s.f.

NOTE:  
 METHOD "CS-WSP" CONT. OSB WOOD SHEATHING STRUCTURAL PANELS INSTALLED IN ACCORDANCE w/TABLE (R602.10.3.1, VRC 2006)

LEGEND	DESCRIPTION
○	BRACED WALL LINE
△	COLUMN TAG

COLUMN TAG	COLUMN DESCRIPTION
A	(3) 2x4
B	(5) 2x4
C	3.5"x5.5" PSL

NOTE:  
 POINT LOADS SHOWN ARE TOTALS(L+D) FOR EACH BEARING END

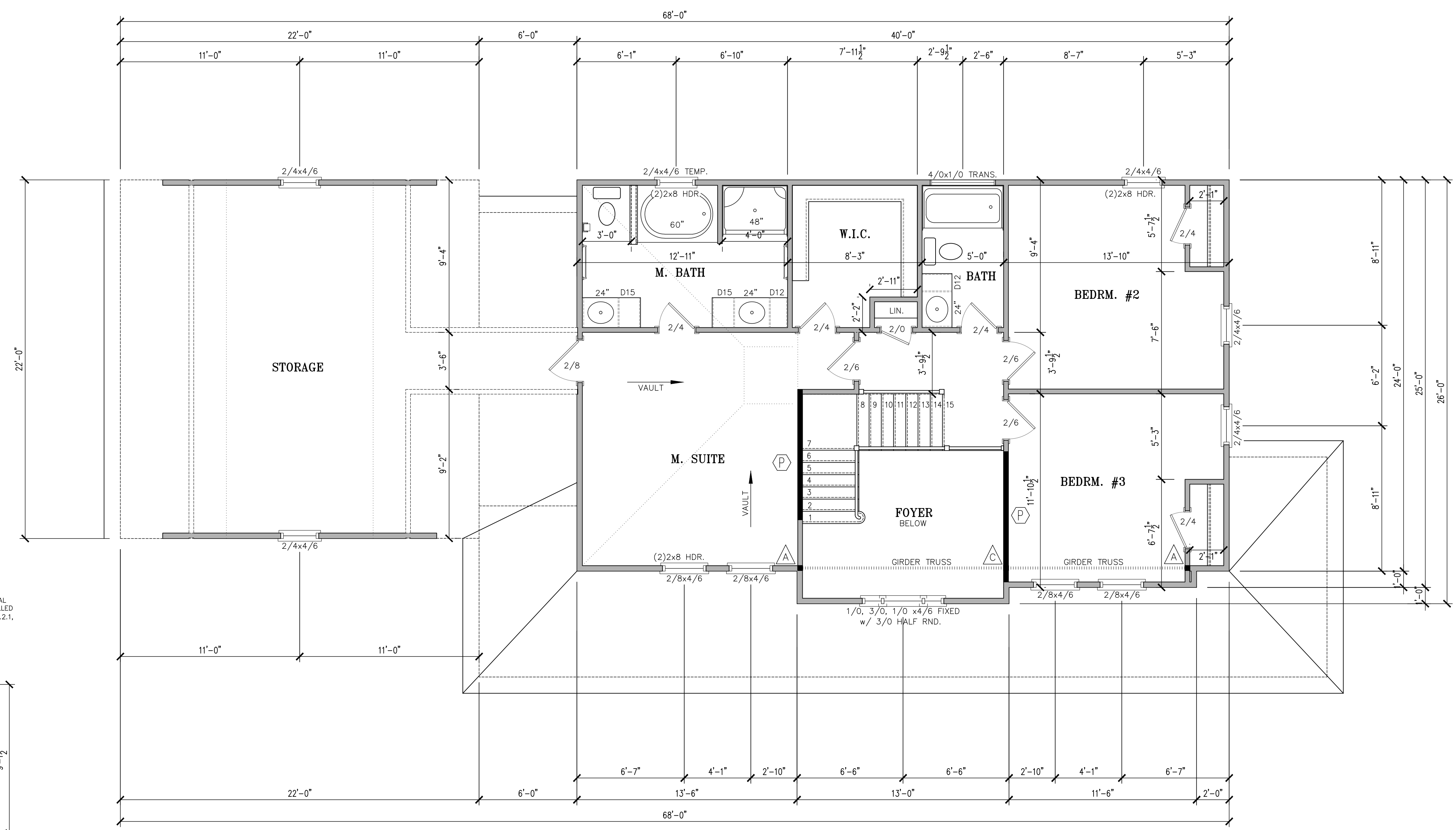
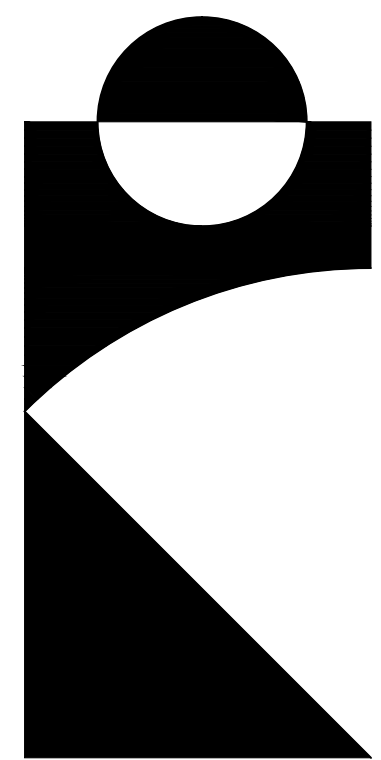
NOTE:  
 SEE ROOF PLAN & MANUFACTURER'S TRUSS LAY-OUT FOR ROOF TRUSS SIZE AND SPACING.

NOTE:  
 HEADERS TO BE (2) 2x6's U.N.O.

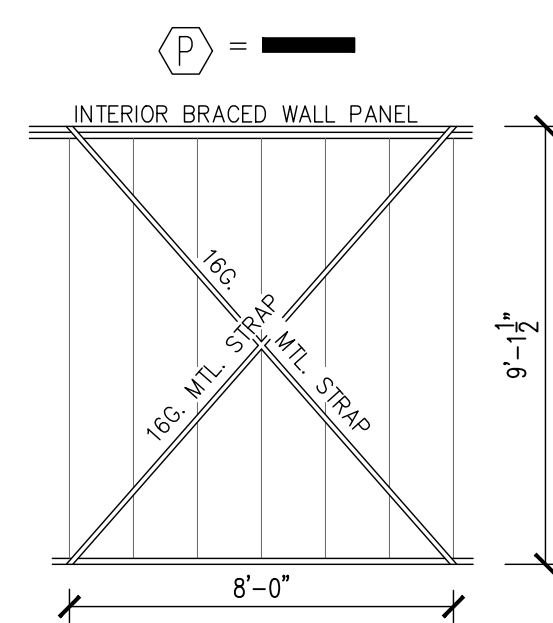
NOTE:  
 ALL EXTERIOR WALLS TO BE 2x4 U.N.O.

NOTE:  
 ALL BEARING WALLS TO HAVE SOLID BLOCKING TO FND.

— = INTERIOR NON-LOAD BAERING WALL  
 ▨ = INTERIOR LOAD BAERING WALL



NOTE:  
 METHOD "LIB" USING APPROVED CONTINUOUS METAL STRAPS @ 45° TO 60° ANGLES, FASTENED & INSTALLED PER MANUF. & IN ACCORDANCE w/TABLE (R602.10.2.1, VRC 2006) (SEE BELOW)



**SECOND FLOOR PLAN**

SCALE: 1/4"=1'-0"

NOTE:  
 METHOD "CS-WSP" CONT. OSB WOOD SHEATHING STRUCTURAL PANELS INSTALLED IN ACCORDANCE w/TABLE (R602.10.3.1, VRC 2006)

LEGEND	DESCRIPTION
○	BRACED WALL LINE
△	COLUMN TAG

COLUMN TAG	COLUMN DESCRIPTION
A	(3) 2x4
B	(5) 2x4
C	3.5"x5.5" PSL

NOTE:  
 POINT LOADS SHOWN ARE TOTALS(L+D) FOR EACH BEARING END

NOTE:  
 SEE ROOF PLAN & MANUFACTURER'S TRUSS LAY-OUT FOR ROOF TRUSS SIZE AND SPACING.

NOTE:  
 HEADERS TO BE (2) 2x6's U.N.O.

NOTE:  
 ALL EXTERIOR WALLS TO BE 2x4 U.N.O.

NOTE:  
 ALL BEARING WALLS TO HAVE SOLID BLOCKING TO FND.